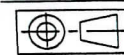


FASCO MOTORS MAY PROVIDE TECHNICAL ASSISTANCE TO OUR CUSTOMERS IN MANY AREAS. HOWEVER, SINCE FASCO MOTOR IS NOT AWARE OF ALL DATA CONCERNING THE USE AND APPLICATION OF THIS MOTOR, THE FITNESS OF THE MOTOR FOR THE APPLICATION MUST BE DETERMINED BY AND IS THE RESPONSIBILITY OF THE CUSTOMER.



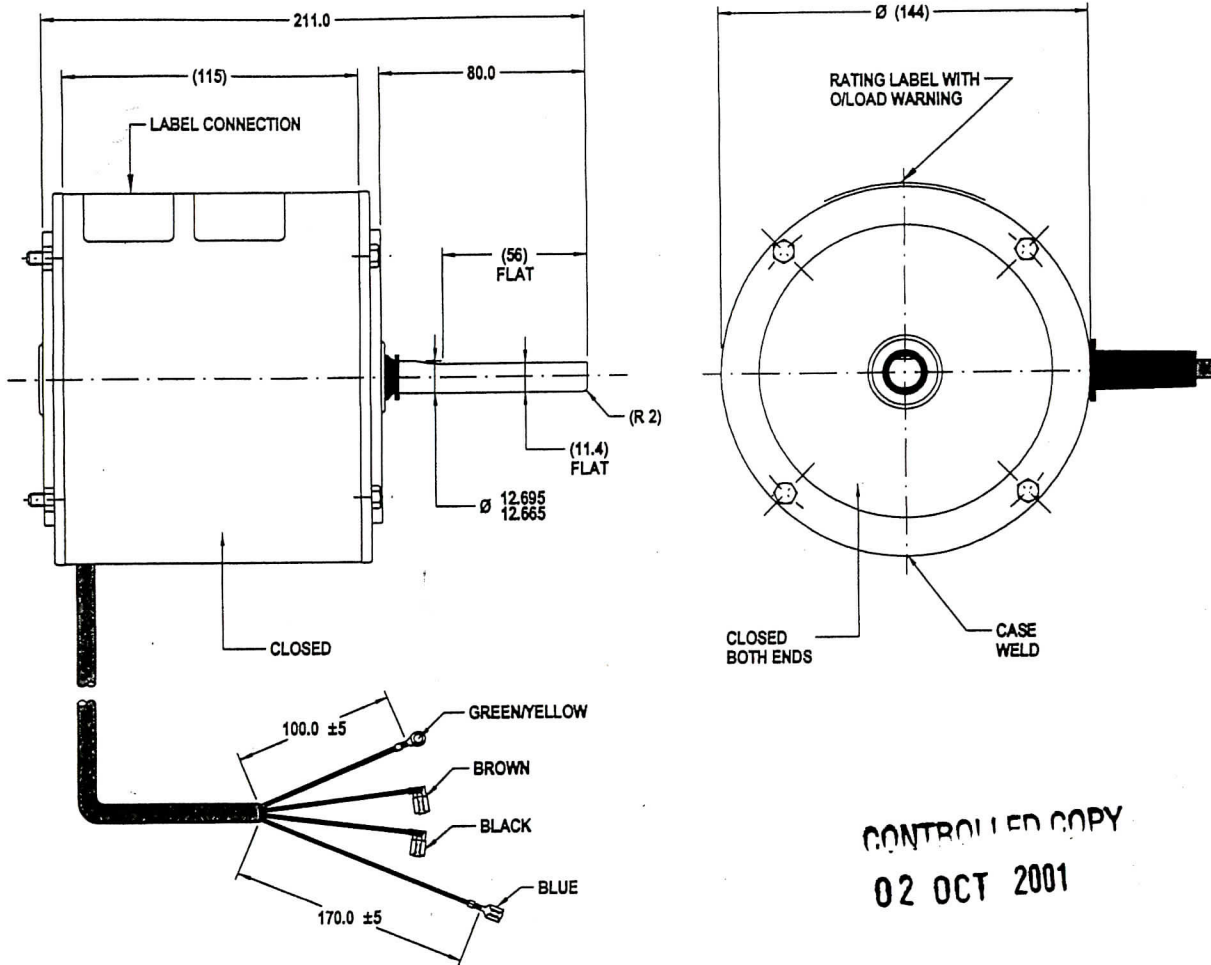
**MOTOR SPECIFICATION**

**8061S009-06**

Q.R. No.	5022	CUSTOMER NO.	-
CUSTOMER	VARIOUS		
MOTOR RATING	VOLTS	240	Hz 50 Ph 1 Duty AOM
	RPM.	915	2.65 AMPS
NOM. OUTPUT	250 WATTS		
ROTATION	CLOCKWISE D/END		
CAPACITOR	START	μF/V	RUN 6/440 μF/V
ENCLOSURE	TOTALLY ENCLOSED		
MOTOR TYPE	CSR	INSULATION CLASS	B130
THERMAL PROTECTION	AUTO RESET OVERLOAD		
APPLICATION	FAN		
BEARING D.E.	6202 ZZ	LUBRICATION	LONG LIFE, WIDE RANGE
BEARING N.D.E.	6202 ZZ		
SUPPLY LEAD	FLEX 1500 ± 30 GREY		
EARTH PROVISION	VIA SUPPLIED LEAD		
BASIC BUILD SPECIFICATION	305-570-05	PAINT/ COLOUR	NIL (PRIMER)
PERFORMANCE SPECIFICATION	SP85049-02		
CONNECTION DIAGRAM	393-072	RATING LABEL	SSTDAUTO.FMT

FINAL INSPECTED MOTORS MUST COMPLY WITH ELECTRIC MOTOR VIBRATION SPECIFICATION (ES049)

THIRD ANGLE PROJECTION



CONTROLLED COPY  
02 OCT 2001



DESIGNED AND MANUFACTURED TO AUSTRALIAN STANDARDS & SPECIFICATIONS

N693

MODEL	8061S009-06
-------	-------------

VOLTS 240	R.P.M. 915	CLASS B130	Hz 50
WATTS 250	TYPE CSR	μF/V S NIL	Ph 1
AMPS 2.6	DUTY AOM	μF/V R 6/440	PROT. AUTO

**WARNING** MOTOR FITTED WITH INTERNAL AUTO RESET OVERLOAD AND MAY RESTART WITHOUT WARNING

**SPECIAL REQUIREMENTS:**

- 1) "V" SEAL TO BE FITTED TO SHAFT
- 2) TIE RODS TO BE ASSEMBLED WITH RED FIBRE WASHERS
- 3) CAPACITOR SUPPLIED LOOSE

UNLESS OTHERWISE SPECIFIED : DIMENSIONS ARE IN MM. TOLERANCES

DECIMALS	ANGULAR
X ± 1.0	± 30'
XX ± 0.5	

MOTOR WEIGHT	7.0
DRAWN	SYDNEY
CHECKED	KITTI
RELEASED	KITTI
SCALE	N.T.S.

**BCB SALES & SERVICE**  
PH: 03 9546 3833  
FAX: 03 9546 3356

01/10/01 BANGKOK, BANG NONGHABURI DISTRICT, NONGHABURI 11000 THAILAND

MOTOR	049:8556T-250-XAD
DWG. NO.	8061S009-06
REVISION	Q

MIC No. 004472  
BY: NITTHAD  
Date: 01/10/01  
MIC: MODIFIED LEAD EXIT FROM NDE/ESH TO BE ON  
Name: MOTOR CASE