

FASCO MOTORS MAY PROVIDE TECHNICAL ASSISTANCE TO OUR CUSTOMERS IN MANY AREAS. HOWEVER, SINCE FASCO MOTOR IS NOT AWARE OF ALL DATA CONCERNING THE USE AND APPLICATION OF THIS MOTOR, THE FITNESS OF THE MOTOR FOR THE APPLICATION MUST BE DETERMINED BY AND IS THE RESPONSIBILITY OF THE CUSTOMER.

FINAL INSPECTED MOTORS MUST COMPLY WITH ELECTRIC MOTOR VIBRATION SPECIFICATION (ES049)

MOTOR SPECIFICATION

| | |
|---------------------------|----------------------------|
| 80855BRVA-A21 | |
| Q.R. No. | Y004424 |
| CUSTOMER | CUSTOMER NO. 6061635 |
| CLIMATE TECHNOLOGIES | |
| VOLTS | 240 Hz |
| PH | 1 Duty |
| AMP | 6.8 |
| 950 WATTS | |
| CLOCKWISE AT DRIVE END | |
| START | 25/400 |
| ENCLOSURE | VENTED |
| MOTOR TYPE | CSR |
| INSULATION CLASS | B 130 |
| AUTO RESET OVERLOAD | |
| FAN-EVAPORATIVE COOLER | |
| BEARING D.E. | 6203 ZZ C3 |
| LUBRICATION | LONG LIFE, WIDE RANGE |
| BEARING N.D.E. | 6202 ZZ C3 |
| SUPPLY LEAD | FLEX 1800 ± 30 GREY |
| EARTH PROVISION | VIA SUPPLIED LEAD |
| BASIC BUILD SPECIFICATION | 305-722-03 |
| PAINT/ COLOUR | PC GREY CASE PLAIN ESHIELD |
| PERFORMANCE SPECIFICATION | SP85377-01 |
| CONNECTION DIAGRAM | 393-402-06 |
| RATING LABEL | SSTDAUTO.FMT |

FASCO DESIGNED AND MANUFACTURED TO AUSTRALIAN STANDARDS & SPECIFICATIONS

MODEL 80855BRVA-A21

CLASS B130 Hz 50

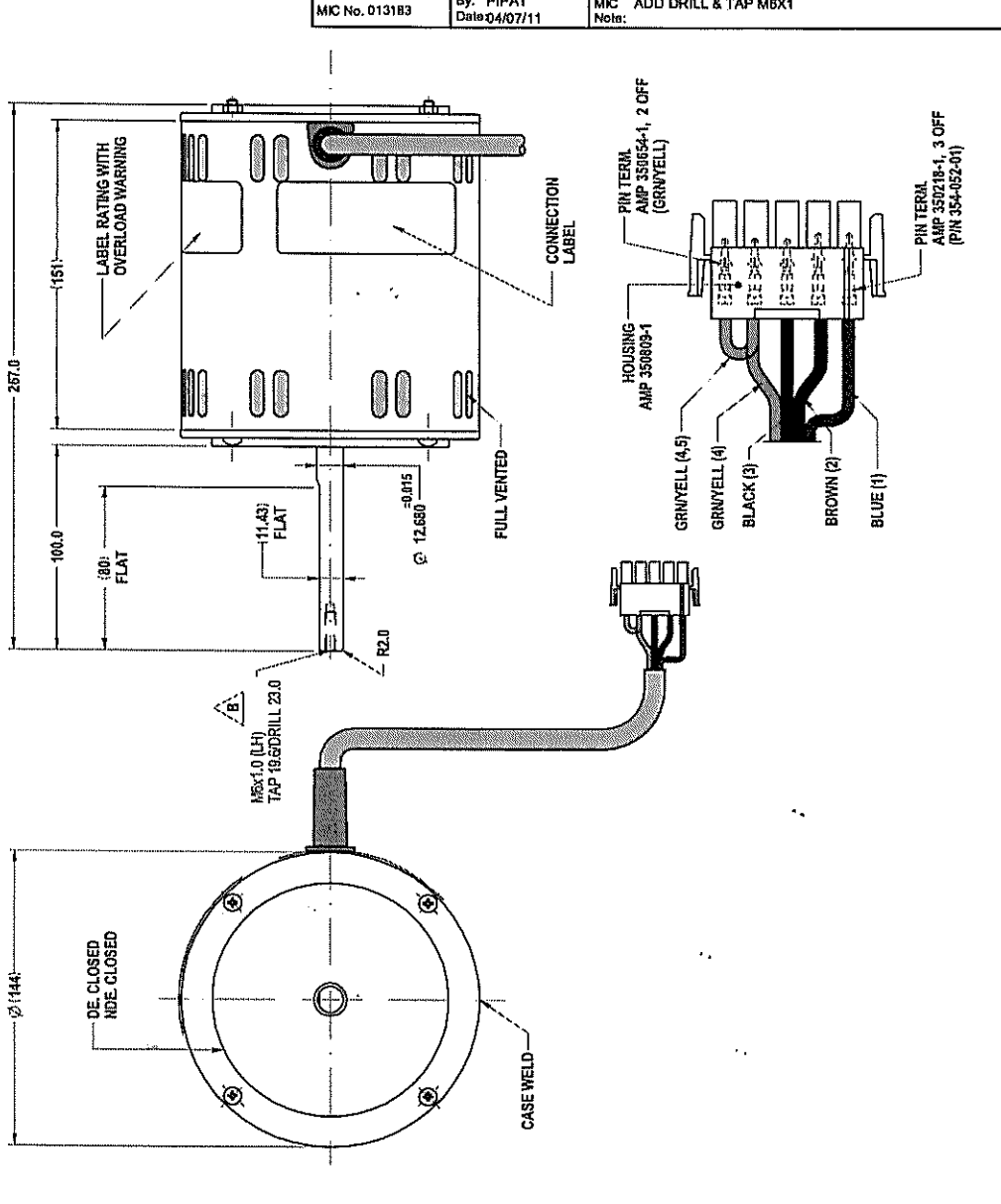
TYPE CSR μF/V S N/L Ph 1

DUTY AOM μF/V R 25/400 PROT. AUTO

WARNING MOTOR FITTED WITH INTERNAL AUTO RESET OVERLOAD AND MAY RESTART WITHOUT WARNING

SPECIAL REQUIREMENTS:

- CAPACITOR SUPPLIED BY CUSTOMER.
- STAMP CUSTOMER NO.6061635 ON THE BULK PACK ALL SIDE.



MIC No. 0131B3 By: PIPAT Date: 04/07/11 MIC ADD DRILL & TAP M6X1 Note:

| | |
|---|--------------------------|
| UNLESS OTHERWISE SPECIFIED : DIMENSIONS ARE IN MM. | |
| DECIMALS | ANGULAR |
| X ± 0.1 | ± 30' |
| XX ± 0.1 | |
| THIS DRAWING REMAINS THE PROPERTY OF FASCO. NO WORK AND MAY NOT BE MADE, COPIED, OR REPRODUCED WITHOUT THE PERMISSION FROM FASCO MOTOR. | |
| MOTOR WEIGHT | 11.0 kg. |
| DRAWN | PIPAT |
| CHECKED | PIPAT |
| RELEASED | KANAPOTE |
| SCALE | N.T.S. |
| FRAME | MOTOR |
| STATUS | R |
| SHEET | B377-855BV-950-XAD:CLIMA |
| REVISION | DWG. NO. 80855BRVA-A21 |
| | B |

FASCO THAILAND
 29/4 MOO 3, BANGKRUAI - SANGHVI, BANGKOK, MIANG NORTH BURESDIKT, NONTHABURI 11000 THAILAND